

Sophos Security Suite

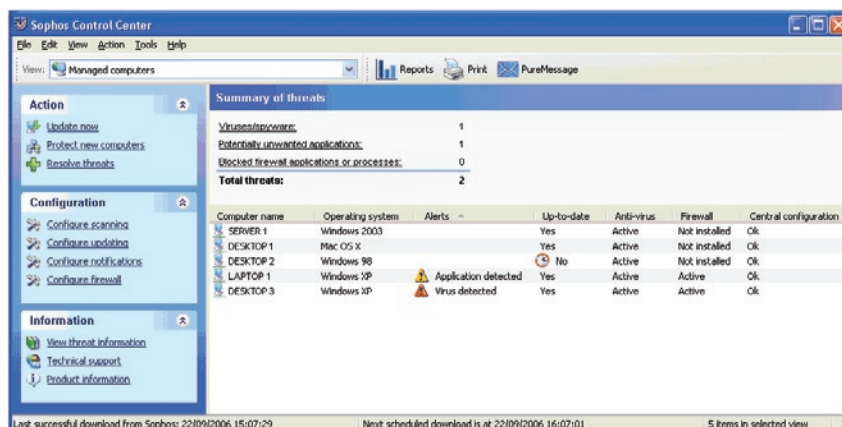
Sophos Security Suite eliminates multiple threats with a single anti-virus, anti-spyware, anti-adware and anti-spam solution, as well as a client firewall. Centrally managed from the Sophos Control Center™, it protects both Windows® and Macintosh® desktop computers, laptops and file servers, as well as Microsoft Exchange email servers and mail stores.

Award winning multi-threat protection in one product

- Sophos Anti-Virus® protects against and cleans up known and unknown threats, including spyware and threats to productivity, such as adware and potentially unwanted applications (PUAs).
- Integrated Behavioral Genotype® Protection identifies suspicious code and blocks it before execution, giving the benefits of a Host Intrusion Prevention System (HIPS) without having to deploy separate software.
- Decision Caching™ technology enhances the performance of on-access scanning by ensuring that only files that have changed are scanned.
- Sophos Client Firewall™ proactively locks down computers, safeguarding against internet worms, hackers, and the risk of unprotected computers connecting to and infecting a network.

Simple installation and management

- Streamlined installation enables non-technical users to deploy anti-virus and client firewall protection across the network in minutes
- Sophos Control Center gives an instant overview of the status of every Windows and Mac computer, summarising threats at a glance, and simplifying key tasks with its easy-to-read dashboard.
- The cleanup of infected machines can be carried out centrally through the Sophos Control Center.
- Sophos Control Center integrates with the PureMessage Console to protect against spam, malware and offensive content.
- Sophos AutoUpdate provides automatic updating direct from Sophos ensuring that all computers, including remote laptops, are protected at all times.



Key benefits

- » Protects Windows and Mac desktops, laptops, file servers and Exchange email servers
- » Allows non-technical users to protect their business quickly and easily
- » Simplifies installation, management and configuration of anti-virus, anti-spyware, anti-spam and desktop firewall with Sophos Control Center
- » Detects and cleans up viruses, spyware, adware and potentially unwanted applications centrally
- » Prevents intrusion and hides desktops and remote computers from hackers
- » Blocks new and targeted threats before they cause damage, with Behavioral Genotype® Protection
- » Scans all inbound, outbound and internal email messages to block malware, spam, offensive content and phishing attacks
- » Updates automatically with the latest protection, direct from Sophos, using Sophos AutoUpdate™
- » Protects proactively against families of malware and spam campaigns, with Genotype® technology
- » Safeguards productivity with fast scanning engine and low impact on network and system resources
- » Includes 24x7x365 support for the duration of the licence and Sophos can be contacted for one-to-one assistance at any time

Comprehensive email security

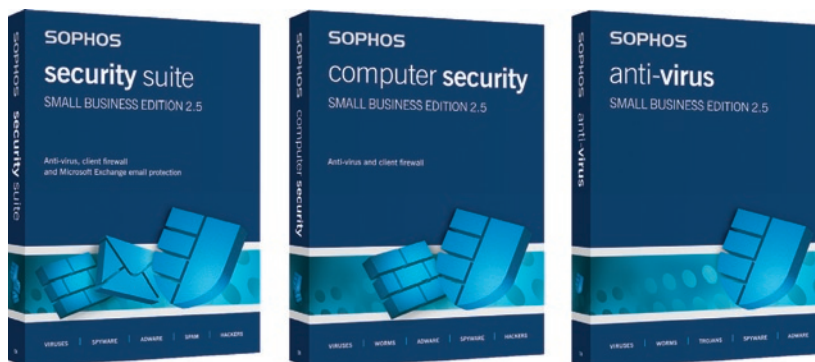
- Sophos PureMessage for Microsoft Exchange provides integrated gateway and messaging security, stopping spam, viruses and spyware.
- It scans all inbound, outbound and internal email messages and Exchange message stores to protect against new or unknown email-borne threats
- Graphical reports can be easily generated to highlight trends in email throughput, show the level of protection, and identify any issues that may require remedial action.
- Provides protection for Microsoft Exchange 2007 and Windows Server 2008
- Existing Active Directory server can be used to populate PureMessage, and any changes will be automatically synchronised, reducing administrative overhead.

Industry-leading expertise 24/7

- Our 24/7 customer support operation is highly acclaimed, while SophosLabs™, our global network of threat analysis centres, provides a rapid response to emerging and evolving threats.

Languages available

- English, French, German, Italian, Japanese, Spanish, Simplified and Traditional Chinese. (Note: Email security is English and Japanese only.)



To evaluate Sophos Security Suite, visit www.sophos.com/products

Platforms supported

Windows and Macintosh desktops

Windows 98 SE

- » Disk space: 90 MB
- » Minimum memory: 128 MB

Windows 2000/2003/Vista, Windows XP Home and Pro

- » Disk space: 90 MB
- » Minimum memory: 128 MB
- » Recommended memory: 256 MB

Mac OS X 10.4 and higher

- » Disk space: 70 MB
- » Minimum memory: 128 MB

Server computer – including Sophos Control Center

Windows 2000/2003/XP Pro, Small Business Server 2003

- » Disk space: 1 GB
- » Minimum memory: 256 MB

Email server

Exchange 2000/2003/2007

- » Disk space: 140 MB
- » Minimum memory: 256 MB

Other small business solutions

Sophos Computer Security Small Business Edition

- » Desktop anti-virus and client firewall

Sophos Anti-Virus Small Business Edition

- » Desktop anti-virus